

# ***SILENCER***®

## **S2410E Series**

### **Instruction Manual**



Proudly designed and manufactured in the great United States

---

Copyright © 2019

Global Focus Marketing & Distribution, Ltd.

2280 Springlake # 106

Dallas, Texas 75234

800-323-4306

<https://gfmd.com/support/>

This manual contains confidential and proprietary information, and is provided to Silencer<sup>®</sup> customers under license. Receipt of this manual does not convey any rights to reproduce or disclose its contents in any form. Global Focus Marketing & Distribution, Ltd. (herein known as GFMD, Ltd) retains all rights to this manual and its contents. Reproducing and/or disclosure of its contents is strictly prohibited, and may violate Copyright and/or Patent laws.

While every effort has been made to ensure the completeness and accuracy of this manual, Global Focus Marketing & Distribution, Ltd. will not be liable for failure to follow standard safety precautions.

Printed in the United States of America.

# Table Of Contents

---

Chapter 1	Getting Started .....	1-1
	Scope .....	1-1
	Unpacking And Inspection.....	1-1
	Setup.....	1-1
	Rotor Installation .....	1-2
Chapter 2	About The S2410E.....	2-1
	Purpose .....	2-1
	Description .....	2-1
Chapter 3	Using The S2410E.....	3-1
	Orientation.....	3-1
	Controls .....	3-1
	Operation .....	3-2
	Set Point .....	3-3
	Program Store .....	3-3
	Program Recall .....	3-3
	Settings Menu .....	3-4
	Operation Tips .....	3-5
	Operation Flowchart .....	3-6
Chapter 4	Cleaning .....	4-1
Chapter 5	Troubleshooting .....	5-1
	Status Codes .....	5-1
	Error Reset.....	5-1
	Troubleshooting Table .....	5-1
Chapter 6	Warranty .....	6-1
Appendix A	Specifications .....	A-1
	Performance Specifications.....	A-1
	Unit Specifications.....	A-2
Appendix B	R. C. F. Chart .....	A-3
Appendix C	Service Log .....	A-5
Appendix D	Replacement Parts List .....	A-6
Appendix E	Lid Release Tool.....	A-7

## Chapter 1

# Getting Started

---

---

## SCOPE

---

This manual contains information with regards to application, installation, and operation of the Silencer<sup>®</sup> S2410E benchtop centrifuge, and must be read prior to setup or operation of the centrifuge.

---

## UNPACKING AND INSPECTION

---

Your new Silencer<sup>®</sup> centrifuge is packed in a specially designed shipping carton. Upon arrival please check the condition of carton and note any damage. Keep all packing materials for the warranty period of the centrifuge.

After unpacking your Silencer<sup>®</sup> carefully inspect it for damage. It is your responsibility to report all damages to the transportation company and filing, if necessary, any damage claims.

At this point take a moment to ensure you have received the correct rotor, tube adapters, etc. If not or if you have any questions regarding compatibility with your tubes, please contact GFMD, Ltd. at 800-323-4306 before proceeding.



## **WARNING**

Do not operate this equipment in a combustible atmosphere!

---

## SETUP

---

For your own safety and to prevent damage to the centrifuge, be sure to read this manual before continuing with setup or operation of this centrifuge.

For smooth operation and long equipment life, choose a stable, level bench top.

Avoid sources of heat and/or moisture such as sinks, water baths, heating ducts, and direct sunlight. A suitable environment is 10° to 30° C (50° to 86° F) with a relative humidity range of 40% to 70%. The minimum clearance is 6" on all sides. A cooler ventilated location and leaving the lid open between cycles will allow longer and/or more frequent cycles without overheating of samples. The maximum number of cycles that may be run consecutively will depend upon operating speed, set time, ventilation around the centrifuge, and ambient temperature. Samples that may be adversely affected by being warmed to 39°C during centrifugation should be centrifuged in a refrigerated centrifuge such as the Silencer<sup>®</sup> S2510R.

Plug the power cord into a properly grounded outlet and turn on main power interrupt (on back of unit next to power cord). For safety, equipment life, and proper performance, your Silencer<sup>®</sup> S2410E's power requirements are 115V AC, 5 amperes, 60Hz. The power cord must be UL listed or CSA certified, 18 AWG, and 6' 7" or less in length.

# Getting Started

---

## **WARNING**

Operating the centrifuge without proper grounding can cause dangerous electrical conditions and could result in serious operator injury!

## **CAUTION**

Operation of centrifuge on an emergency power circuit can cause damage to electronic circuits.

## **CAUTION**

Operation of centrifuge on a power strip increases ground resistance and can cause damage to electronic circuits.

---

## **ROTOR INSTALLATION**

---

Insert the rotor onto the motor shaft ensuring the alignment pin in the motor shaft fits correctly into the alignment groove in the bottom of the rotor. The rotor must be installed correctly for proper operation.

Replace the rotor securing nut. The nut must be securely tightened.

## Chapter 2

# About The S2410E

---

---

## PURPOSE

---

The Silencer® S2410E is a quiet, general purpose centrifuge designed to be used to accelerate sample separation through the application of relative centrifugal force (RCF). This product is not intended to diagnose, treat, cure or prevent any disease.

---

## DESCRIPTION

---

The direct drive system employs a powerful, specially designed, balanced, brushless motor ensuring a smooth quiet operation spanning the full speed range of the instrument. This design also promotes long bearing life and eliminates brush maintenance, thereby reducing operating costs.

Excellent stability against imbalance is achieved due to special vibration absorbing drive assembly mounts.

The operator and the S2410E are protected by several safety features:

- The centrifuge cannot be started with the lid open.
- The centrifuge will not run if the lidlock fails to securely lock.
- Once the rotor is in motion the lid cannot be opened until the rotor has stopped.
- The see-through high-strength lid allows the operator to view the rotor chamber without opening the lid.
- The rotor chamber is strong and easy to clean.

For complete equipment specifications see Appendix A.

## Chapter 3

# Using The S2410E

## ORIENTATION

Take time now to acquaint yourself with the S2410E's displays and controls. The basic operation is very simple and the controls are mostly self-explanatory.

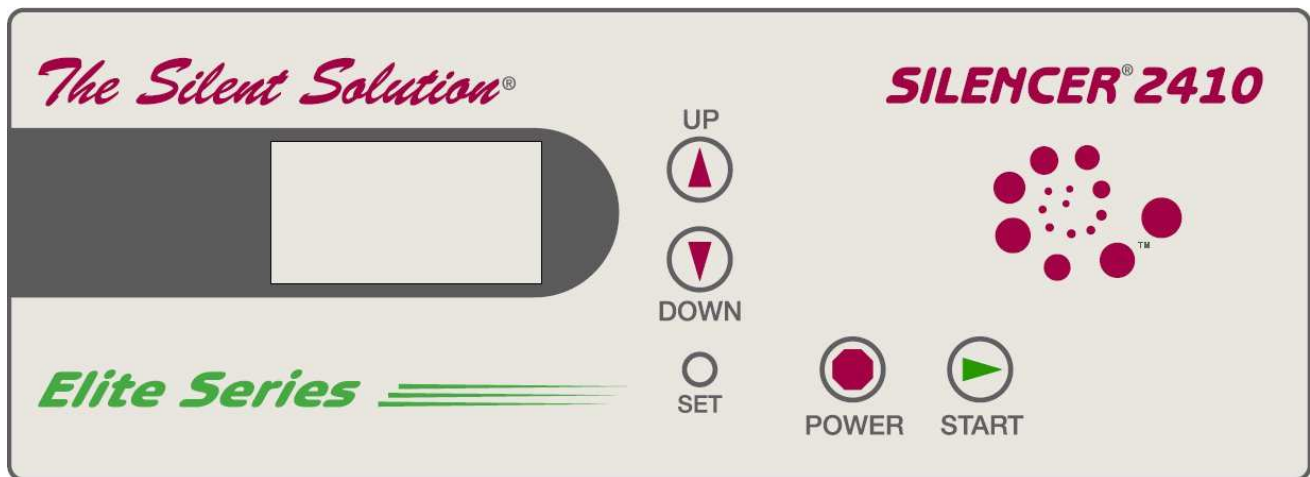


Figure 3.1



## WARNING

Turning the power off does not remove power to the centrifuge. Remove all power to the unit by unplugging the power cord.

## CONTROLS

### POWER

Press the POWER button once to bring the unit out of SLEEP mode and into STANDBY mode. This unlocks the lid and turns the display on. Pressing the POWER button while the power is on turns the display off and puts the unit into a low power SLEEP mode.

Pressing the POWER button during a run cycle stops the cycle.

Pressing the POWER button while in any SET mode cancels and returns the centrifuge to the STANDBY MODE.

### SET

Press to enter the SET POINT mode

### UP

Press the UP button to increase the value of the selected item.

# Using The S2410E

---

## DOWN

Press the DOWN button to decrease the value of the selected item.

## START

If pressed when the unit is in the STANDBY mode, the START button will start the run cycle, which is indicated by the display going into inverse mode (dark background and light text).

Pressing the START button while in any SET mode will accept changes and return to the STANDBY mode.



## WARNING

Do not operate this equipment in a combustible atmosphere!

---

## OPERATION

---

Chapter 1 must be read and the S2410E must be setup accordingly before continuing.

Press the POWER button to bring the centrifuge out of the SLEEP mode, turn the display on, and unlock the lid.

2000 RPM / 605 x G  
5 MINUTES

The set speed and time defaults to the last saved speed and time setting. The settings can be changed in the SET POINT mode or a saved program can be recalled in the PROGRAM RECALL mode.

Open the lid and load your samples, taking care to maintain a balanced load.

Close the lid and press the START button. The lidlock will engage, the display will show the actual speed, and the centrifuge will accelerate to the set speed. Upon reaching the set speed the time will start counting down, and the display will show the time remaining.

When the set time has elapsed, the centrifuge will decelerate to a stop.

When the rotor has come to a complete stop the lidlock will release, and display will revert back to set speed and time.

---

## SET POINT

---

The SET POINT mode shows the current speed and time settings.

**NOTE:** The current settings can not be changed if the centrifuge is in the LOCKED mode.



# Using The S2410E

---

```
SET POINTS
▶ RPM: 2000 RCF: 0605
  TIME: 005 MINUTES
```

The currently selected item is indicated with an arrow. To select another parameter for modification press and release the SET button.

Modify the selected parameter by pressing the UP or DOWN button.

Cancel changes by pressing the POWER button.

Accept the changes and return to the STANDBY mode by pressing the START button.

If you wish to save these settings press and hold the SET button for approximately two seconds to enter the PROGRAM STORE mode (indicated by three short beeps).

---

## PROGRAM STORE

---

The PROGRAM STORE mode displays the three program locations.

```
PROGRAM - STORE
▶ PROG NUMBER: 1
  PROG NUMBER: 2
  PROG NUMBER: 3

RPM    TIME
2000   005
```

The currently selected program is indicated with an arrow. Press the SET button to select another program location.

The current saved speed and time for the selected program is displayed below the program list.

Press the POWER button to cancel programming and return to the STANDBY mode.

Press the START button to store the settings into the selected program location and return to the STANDBY mode.

---

## PROGRAM RECALL

---

Press and hold the SET button for approximately 2 seconds to enter the PROGRAM RECALL mode (indicated by three short beeps).

The PROGRAM RECALL mode displays the three selectable programs.

# Using The S2410E

---

```
PROGRAM - RECALL
▶ PROG NUMBER: 1
  PROG NUMBER: 2
  PROG NUMBER: 3

RPM    TIME
2000   005
```

The currently selected program is indicated with an arrow. Press the SET button to select another program location.

The programmed speed and time for the selected program is displayed below the program list.

Press the POWER button to cancel program selection and return to the STANDBY mode.

Press the START button to accept the program selection and return to the STANDBY mode.

## **SETTINGS MENU**

---

Press the POWER button to put the centrifuge into the SLEEP mode (indicated by one beep).

Press and hold the SET button while pressing and releasing the POWER button.

Continue to hold the SET button until the unit enters the SETTINGS MENU (indicated by 2 short beeps)

Release the SET button.

```
SETTINGS MENU
▶ BEEPS (EOR):      1
  BEEPS (error):    5
  RCF MODE:         OFF
  BRAKES:           9
  OPTIONAL EOR LED: 2
```

The SETTINGS MENU shows the current user settings.

The currently selected item is indicated with an arrow. To select another parameter for modification press and release the SET button.

Modify the selected parameter by pressing the UP or DOWN button.

Accept the changes and return to the STANDBY mode by pressing the START button.

### **BEEPS (EOR)**

This determines the number of times the centrifuge will beep at the end of each run. The default is 1 and the allowable settings are 0 to 9.

# Using The S2410E

---

## **BEEPS (error)**

This determines the number of times the centrifuge will beep when an error is incurred. The default is 5 and the allowable settings are 5 to 9.

## **RCF MODE**

This allows the operator to choose how speed will be set. If the RCF MODE is OFF the speed is set by RPM in 100 RPM increments. If the RCF MODE is ON the speed is set by RCF in increments of 10xg.

## **BRAKES**

This adjusts the braking level. The default is 9 and the allowable settings are OFF to 9.

## **OPTIONAL EOR LED**

This setting has no effect unless the optional End of Run Light is installed. This setting determines the length of time (in minutes) that the green LED will remain on at the end of each run. The default is 2 and the allowable settings are 0 to 99.

---

## **OPERATION TIPS**

---

- Do not drop or slam the lid!
- Use the emergency lid lock release only for emergencies.
- Only use the supplied emergency lid lock release tool.
- Unplug the centrifuge before using the emergency lid lock release tool.
- Leave the lid open between cycles.

If there are any questions regarding operation please contact GFMD, Ltd. at 800-323-4306.

# Using The S2410E

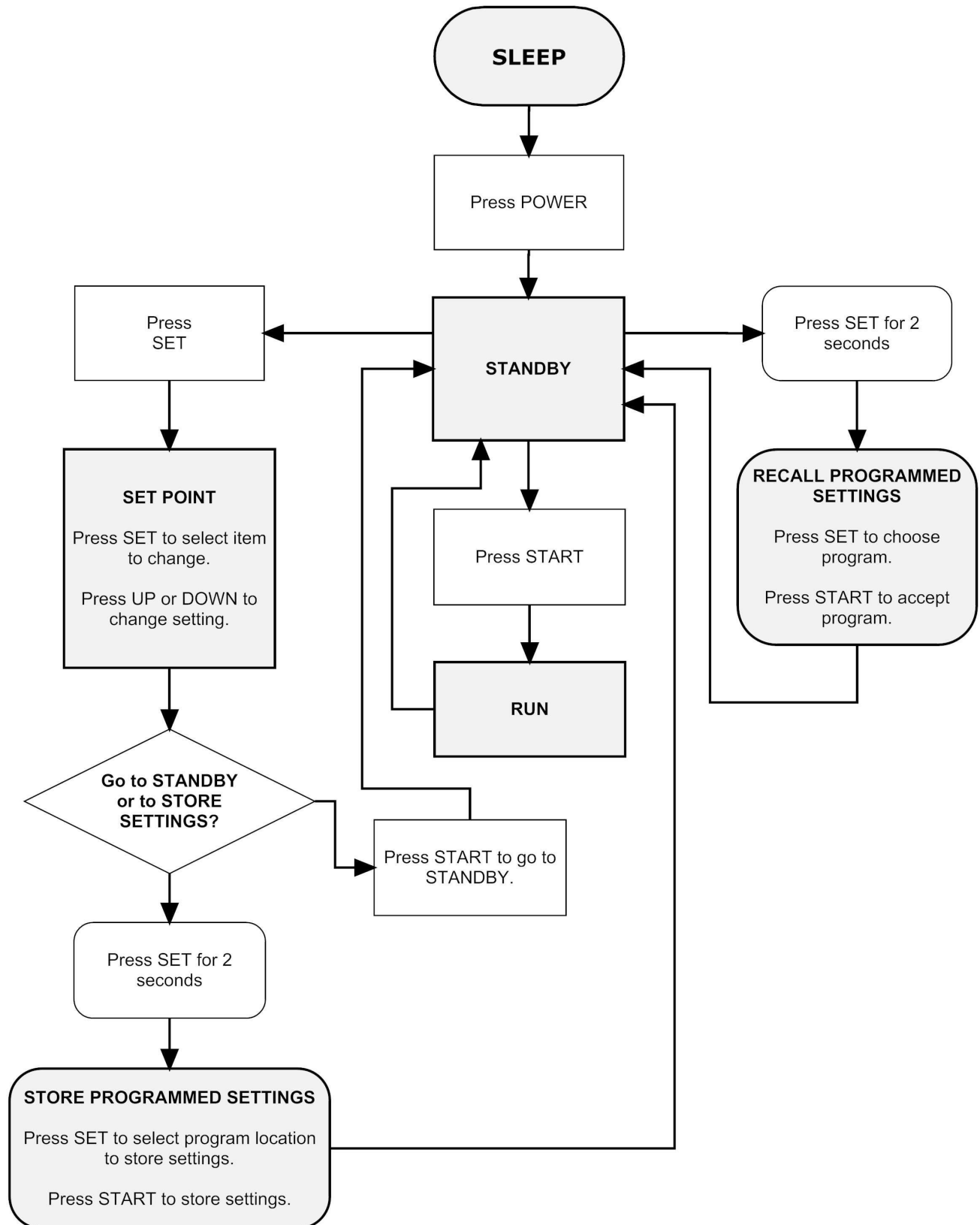


Figure 3.2

# Cleaning

---

## **⚠ WARNING**

Turning the power off does not remove power to the centrifuge. Remove all power to the unit by unplugging the power cord.

## **⚠ WARNING**

Standard safety precautions for handling of biological hazards must be followed!

## **CAUTION**

Do not get any liquids into the top of the motor. Many disinfectants are extremely corrosive and may damage the motor.

## **CAUTION**

Allowing liquid levels in the rotor chamber to rise to the bottom of the motor seal may result in serious damage to the centrifuge.

- The rotor must be removed from the centrifuge for disinfecting.
- Clean tube breakages and spills immediately and thoroughly. The interior can be disinfected with disinfectants such as bleach, followed by a clear water rinse and wipe. The interior must be rinsed and dried thoroughly before using the centrifuge. Use water sparingly when rinsing, as the motor seal is not watertight.
- The exterior should be kept clean with the use of a mild soap and a damp (not wet) lint-free cloth. The centrifuge must be dried thoroughly before using.

## Chapter 5

# Troubleshooting

---

---

## STATUS CODES

---

This is a list of error codes and the brief description that the centrifuge displays when an error is encountered. Check under symptoms for more details.

ERROR: 1.1	Indicates no power is getting to the motor.
ERROR: 1.2	Indicative of low line voltage or a momentary sag.
ERROR: 1.3	Indicative of a momentary drop or loss of line voltage. (LOCKING)
ERROR: 7.1	Check the lid safety interlock switch for proper alignment and continuity.
ERROR: 7.2	Check the lid safety interlock switch for proper alignment and continuity.
ERROR: 7.3	Do not attempt to open the lid until the unit has stopped. (LOCKING)
ERROR: 8	Ensure the line voltage is stable & the circuit isn't overloaded.

---

## ERROR RESET

---

Pressing the front panel POWER button will reset most error messages.

Locking errors indicate an issue that needs to be addressed before the unit is put back into service. Unplug the centrifuge for approximately 20 seconds in order to reset locking errors.

---

## TROUBLESHOOTING TABLE

---

<b>SYMPTOM</b>	<b>The lid remains locked and the displays are not illuminated when the POWER button is pressed.</b>	
	<b>POSSIBLE CAUSES</b>	<b>POSSIBLE SOLUTIONS</b>
	No power to the S2410E.	Ensure the S2410E is plugged in, there is power to the receptacle, and the main power switch is on.
	The fuses are blown.	Replace the fuses with 5A, 250V, time delay fuses. If the fuses blow again contact GFMD, Ltd. at 800-323-4306 for assistance.

<b>SYMPTOM</b>	<b>Will not start when the START button is pressed and “ERROR: 7.1” is displayed.</b>	
	<b>POSSIBLE CAUSES</b>	<b>POSSIBLE SOLUTIONS</b>

# Troubleshooting

	The lid safety interlock switch is defective or misaligned.	Check the lid safety interlock switch for proper alignment and continuity.
	Lid is not closed completely preventing the lid from locking.	Make sure the lid is completely closed.
	Locking mechanism is mechanically binding.	Check for proper lid lock solenoid movement.
	Lid lock safety interlock switch is defective or misaligned.	Check the lid lock safety interlock switch for proper alignment and continuity.

<b>SYMPTOM</b>	<b>Will not start when the START button is pressed and “ERROR: 1.1” is displayed.</b>	
	<b>POSSIBLE CAUSES</b>	<b>POSSIBLE SOLUTIONS</b>
	Indicates no power is getting to motor.	<p>Ensure the motor wires are securely connected to the Drive/Brake Relay Socket.</p> <p>Ensure the motor wires from the Drive/Brake Relay Socket are properly connected to MOTA1, MOTB1, and MOTC1 on the Power PCB.</p> <p>The Drive/Brake Relay’s drive contacts may be pitted or worn.</p> <p>The Drive/Brake Relay may be loose in the relay socket.</p>
	The motor tachometer cable is unplugged.	Ensure the motor tachometer cable is connected to MOTOR1 on the Power PCB.
	The power sagged so the unit did not start before the bootstrap capacitors discharged.	<p>Check electrical outlet for stable line voltage, and ensure that the circuit isn’t overloaded.</p> <p>Reset the unit by turning the main power switch off for approximately 20 seconds and then back on.</p>

# Troubleshooting

SYMPTOM	Shuts down and a status code is displayed.	
	POSSIBLE CAUSES	POSSIBLE SOLUTIONS
	<b>ERROR: 1.2</b> - Indicative of low line voltage or a momentary sag in line voltage.	Check for a loose power cord connection to the outlet, an overloaded circuit, or line voltage below 110 VAC.
	<b>ERROR: 1.3</b> - Indicative of a momentary drop in line voltage or loss of line voltage.	Reset the unit by turning the main power switch off for approximately 20 seconds and then back on.
	<b>ERROR: 7.2</b> - Indicates the lid safety interlock switch failed during a run cycle or an attempt was made to open the lid during the run cycle	<p>If there was not an attempt to open the lid before the unit came to a complete stop, see suggestions for the centrifuge not starting and giving an “ERROR: 7.1” error.</p> <p>If someone attempted to open the lid during the run cycle, please wait until the unit has come to a complete stop before opening the lid. Manually releasing the lid during the cycle creates a hazardous condition and is an OSHA safety violation.</p>
	<b>ERROR: 7.3</b> - Indicates the lid safety interlock switch failed during deceleration or an attempt was made to open the lid before the unit came to a complete stop.	<p>If there was not an attempt to open the lid before the unit came to a complete stop, see suggestions for the centrifuge not starting and giving an “ERROR: 7.1” error.</p> <p>If someone attempted to open the lid during the run cycle, please wait until the unit has come to a complete stop before opening the lid. Manually releasing the lid during the cycle creates a hazardous condition and is an OSHA safety violation.</p>
	<b>ERROR: 8</b> - Indicates the speed was too erratic.	Check electrical outlet for stable line voltage, and ensure that the circuit isn’t overloaded.



# Troubleshooting

---

<b>SYMPTOM</b>	<b>The sample temperature is exceeding 39°C.</b>	
	<b>POSSIBLE CAUSES</b>	<b>POSSIBLE SOLUTIONS</b>
	The rotor chamber heat extraction fan isn't turning on.	Verify that the fan is turning on when the cycle is started, continues to run during the cycle, and for several minutes after the rotor comes to a complete stop.
	Cycle times are too long, operating speed is too high, and /or cycles are too frequent.	Lower the operating speed (see Appendix B R.C.F. Chart for appropriate speed), shorten spin time, and/or allow more cooling time between cycles with the lid open.
	Centrifuge is under a heat vent.	Relocate the centrifuge away from heat vents.
Centrifuge's immediate ambient environment is warm due to other equipment.	Relocate unit away from heat producing equipment.	

## Chapter 6

# Limited Warranty Statement

---

New Silencer<sup>®</sup> centrifuges are warranted to be free from defects in material and workmanship for a period of one year from the date of delivery. GFMD, Ltd., or its agent, will repair or replace and return free of charge any part that is returned, transportation prepaid by user, to GFMD, Ltd., or its agent, within said period, and that is found upon inspection to have been defective in materials or workmanship.

There is an additional one year warranty on parts plus an additional three years on the motor. During this period GFMD, Ltd., or its agent, will repair or replace and return free of charge any part that is returned, transportation prepaid by user, to GFMD, Ltd., or its agent, within said period, and that is found upon inspection to have been defective in materials or workmanship. Labor is not included during this period.

These warranties do not include normal wear from use, or operator maintenance. It does not apply to any instrument or part that has been altered by anyone other than an employee of the manufacturer or its agent nor to any instrument that has been damaged through accident, negligence, failure to follow operating instructions, natural disaster, the use of electric currents of circuits other than those specified on the plate affixed to the instrument, insufficient or excessive electrical supply, operation on emergency or backup generators, abnormal mechanical or environmental conditions, misuse or abuse.

GFMD, Ltd. reserves the right to change, alter, modify or improve any of its instruments without any obligation whatsoever to make corresponding changes to any instrument previously sold or shipped.

The foregoing obligations are in lieu of all other obligations including negligence and all warranties of merchantability or otherwise, expressed or implied in fact or by law and state our entire and exclusive liability and buyer's exclusive remedy for any claim or damages in connection with the sale or furnishing of goods or parts, their design, suitability for use, installation or operation. GFMD, Ltd., or its agent, will in no event be liable for any special or consequential damages whatsoever, and our liability under no circumstances will exceed the contract price for the goods for that liability is claimed.

## Appendix A

# Specifications

---

### PERFORMANCE SPECIFICATIONS

---

- Maximum speed:
  - S2410E-HZ w/ 12 x 10ml Horizontal Rotor 4,500 RPM
  - S2410E-FA w/ 24 x 10ml FA Rotor 5,000 RPM
  - S2410E-PPP w/ 12 x 5ml FA Rotor 6,000 RPM
  - S2410E-SC w/ 8 x 5ml FA Rotor 6,000 RPM
- Maximum RCF:
  - S2410E-HZ w/ 12 x 10ml Horizontal Rotor 3,060 x g
  - S2410E-FA w/ 24 x 10ml FA Rotor 3,651 x g
  - S2410E-PPP w/ 12 x 5ml FA Rotor 3,847 x g
  - S2410E-SC w/ 8 x 5ml FA Rotor 4,039 x g
- Approximate acceleration rate (0 - Max. RPM): 10 seconds
- Approximate deceleration rate (Max. - 0 RPM):
  - S2410E-HZ w/ 12 x 10ml Horizontal Rotor 20 seconds
  - S2410E-FA w/ 24 x 10ml FA Rotor 30 seconds
  - S2410E-PPP w/ 12 x 5ml FA Rotor 30 seconds
  - S2410E-SC w/ 8 x 5ml FA Rotor 30 seconds
- Maximum noise level - Horizontal rotor 58 dBA
- Speed Control +/- 2%
- Timer +/- 5%
- Power requirements - 115 volts, 5 amperes

---

## UNIT SPECIFICATIONS

---

- Dimensions 13”w x 16.5”d x 11.5”h
- Spill resistant control panel
- Completely enclosed rotor chamber
- High-strength alloy rotor chamber
- See-through high-strength lid
- Dual safety interlock to ensure lid is closed and locked
- Direct drive system
- Brushless D.C. motor (2/3 HP)
- Microprocessor control
- Digital speed display
- Digital R.C.F. display
- Digital time display
- Timer range 1 - 999 plus hold
- Variable automatic dynamic braking system

## Appendix B

# R.C.F. Chart

RELATIVE CENTRIFUGAL FORCE CHART						
RPM	R.C.F.					
	S2410E-HZ w/ 12 x 10ml Hz Rotor	S2410E-FA w/ 24 x 10ml FA Rotor†	S2410E-PPP w/ 12 x 5ml FA Rotor	S2410E-SC w/ 8 x 5ml FA Rotor		
		w/ 5ml Adapter		w/ 5ml Adapter		
500	38	32	37	32	27	28
600	54	46	53	46	38	40
700	74	63	72	63	52	55
800	97	82	93	82	68	72
900	122	104	118	104	87	91
1,000	151	128	146	128	107	112
1,100	183	155	177	155	129	136
1,200	218	185	210	185	154	162
1,300	255	217	247	217	181	190
1,400	296	252	286	251	209	220
1,500	340	289	329	289	240	252
1,600	387	329	374	328	274	287
1,700	437	371	422	371	309	324
1,800	490	416	473	416	346	363
1,900	546	464	527	463	386	405
2,000	605	514	584	513	427	449
2,100	666	566	644	566	471	495
2,200	731	621	707	621	517	543
2,300	799	679	772	679	565	593
2,400	870	740	841	739	616	646
2,500	945	803	913	802	668	701
2,600	1,022	868	987	867	722	758
2,700	1,102	936	1,065	935	779	818
2,800	1,185	1,007	1,145	1,006	838	880
2,900	1,271	1,080	1,228	1,079	899	943
3,000	1,360	1,156	1,314	1,155	962	1,010
3,100	1,452	1,234	1,403	1,233	1,027	1,078
3,200	1,548	1,315	1,495	1,314	1,094	1,149

<b>RELATIVE CENTRIFUGAL FORCE CHART</b>						
<b>RPM</b>	<b>R.C.F.</b>					
	<b>S2410E-HZ</b> w/ 12 x 10ml Hz Rotor		<b>S2410E-FA</b> w/ 24 x 10ml FA Rotor†		<b>S2410E-PPP</b> w/ 12 x 5ml FA Rotor	<b>S2410E-SC</b> w/ 8 x 5ml FA Rotor
		w/ 5ml Adapter		w/ 5ml Adapter		
3,300	1,646	1,398	1,590	1,397	1,164	1,222
3,400	1,747	1,484	1,688	1,483	1,235	1,297
3,500	1,851	1,573	1,789	1,572	1,309	1,374
3,600	1,959	1,664	1,893	1,663	1,385	1,454
3,700	2,069	1,758	1,999	1,757	1,463	1,536
3,800	2,182	1,854	2,109	1,853	1,543	1,620
3,900	2,299	1,953	2,221	1,952	1,626	1,706
4,000	2,418	2,054	2,336	2,053	1,710	1,795
4,100	2,540	2,158	2,455	2,157	1,797	1,886
4,200	2,666	2,265	2,576	2,263	1,885	1,979
4,300	2,794	2,374	2,700	2,373	1,976	2,074
4,400	2,926	2,486	2,827	2,484	2,069	2,172
4,500	3,060	2,600	2,957	2,598	2,164	2,272
4,600			3,090	2,715	2,261	2,374
4,700			3,226	2,834	2,361	2,478
4,800			3,365	2,956	2,462	2,585
4,900			3,506	3,081	2,566	2,694
5,000			3,651	3,208	2,672	2,805
5,100					2,780	2,918
5,200					2,890	3,033
5,300					3,002	3,151
5,400					3,116	3,271
5,500					3,233	3,394
5,600					3,352	3,518
5,700					3,472	3,645
5,800					3,595	3,774
5,900					3,720	3,905
6,000					3,847	4,039

† Maximum R.C.F. for outer row of tube holders. For inner row multiply the R.C.F. for outer row by .885.

Appendix C

# Service Log

---

<b>Service Log</b>		
<b>Date</b>	<b>Service Performed</b>	<b>By</b>

## Appendix D

# Replacement Parts List

---

<b>Description</b>	<b>Qty Needed</b>	<b>Part No.</b>
Gasket, Lid	1 ea.	SIL00476
Gasket, Motor, S2410E	1 ea.	SIL00456B
Hinge, Lid, S2410 v2	2 ea.	SIL00512
Latch, Lidlock	1 ea.	SIL00642B
Lid, S2410 v2	1 ea.	SIL00661
Lidlock Assembly	1 ea.	SIL00671B
Solenoid (part of SIL00671B)	1 ea.	SIL00131
Switch, Lid Interlock (part of SIL00671B)	1 ea.	SIL02456
Switch, Lock Interlock (part of SIL00671B)	1 ea.	SIL02457
Motor Assembly, S2410E	1 ea.	SIL00730B
Mounting Bracket, Motor	2 ea.	SIL00787
Nut, Rotor Securing	1 ea.	SIL00791
P.C.B., Display / Control, S2410E / S2450E	1 ea.	SIL00815B
P.C.B., Power, S2410 / S2450E	1 ea.	SIL00841
Relay, Drive / Brake	1 ea.	SIL01103

Parts are sold individually. The quantity listed is the quantity used per unit.



# Lid Release Tool

---



## **WARNING**

The lid release tool is provided for emergency access to samples only. Unplug the centrifuge before attempting this procedure!

The correct tool must be used for your unit or the lid safety interlock switch may become damaged. If the interlock switch is damaged the unit can't detect the lid being closed and therefore won't start.

To use the release tool:

1. Unplug the centrifuge.
2. Insert the tool completely into the release access port on the left side of the unit (just below the lid locking bracket).
3. Push the handle towards the back of the unit and lift the centrifuge lid.